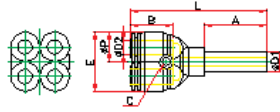




Plug-In Reducer Double Y

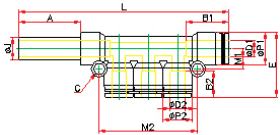


**PXJ : Racor Instantáneo "X" Distribución Red Espiga 4 x 2**

MODELO	D1	D2	P	L	E	C	A	B	Orificio	PESO
PXJ0604	6	4	12.5	43.6	21.0	3.3	17.0	15.7	2.0	12.8
PXJ0806	8	6	14.6	48.0	25.0	3.3	19.1	17.0	3.5	17.5



Plug-In Reducer Triple Branch



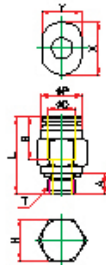
**PKJ : Racor Instantáneo Derivación Espiga 3 x 2 Reducción**

MODELO	D1	D2	J	P1	P2	L	E	C	A	B1	B2	M1	M2	Orificio	PESO
PKJ0604	6	4	6	12.5	10.5	84.3	24.2	3.3	25.0	17.6	16.3	7.6	34.0	3.0	14.1
PKJ0804	8	4	8	14.8	10.5	89.5	28.5	4.3	28.5	18.7	16.3	9.2	34.8	3.0	16.1
PKJ0806	8	6	8	14.8	12.5	95.5	34.0	4.3	28.5	18.7	17.6	9.3	41.1	4.0	17.8
PKJ1006	10	6	10	17.5	12.5	103.2	31.3	4.3	31.0	19.6	17.6	9.5	41.7	4.0	23.5
PKJ1008	10	8	10	17.5	14.8	109.7	34.5	4.3	31.0	19.6	18.7	8.5	47.0	6.5	28.3

**GAMA DE RACORES "COMPACT":**  
Para máquinas y usos de neumática miniaturizados.



Male Straight

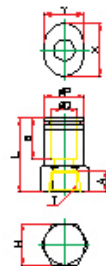


**PC-C : Racor Instantáneo Compacto Cónico Recto**

MODELO	D	P	T	L	A	B	H	X	Y	Orificio	PESO
PC-C 03-M3	3	7.0	M3*0.5p	17.1	4.0	11.1	7	9.2	7.2	1.5	1.0
PC-C 03-M5	3	7.2	M5*0.8p	17.7	4.6	11.1	8	9.2	7.2	2.0	3.0
PC-C 03-M6	3	7.2	M6*1.0p	18.2	5.1	11.1	8	9.2	7.2	2.0	3.0
PC-C 03-01	3	7.2	R 1/8	14.5	8.0	11.3	10	9.2	7.2	2.0	4.0
PC-C 04-M3	4	8.0	M3*0.5p	17.7	4.0	11.6	8	10.4	8.2	1.5	3.0
PC-C 04-M5	4	8.0	M5*0.8p	18.2	4.6	11.6	8	10.4	8.2	2.4	3.0
PC-C 04-M6	4	8.0	M6*1.0p	18.8	5.1	11.6	8	10.4	8.2	3.0	3.0
PC-C 04-01	4	10.0	R 1/8	17.3	8.0	11.6	10	10.4	8.2	3.0	6.0
PC-C 06-M5	6	10.0	M5*0.8p	19.4	4.6	12.8	10	12.4	10.2	2.4	4.0
PC-C 06-M6	6	10.0	M6*1.0p	19.9	5.1	12.8	10	12.4	10.2	2.4	4.0
PC-C 06-01	6	10.0	R 1/8	19.6	8.0	12.8	10	12.4	10.2	5.0	6.0



Female Straight

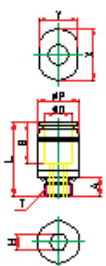


**PCF-C : Racor Instantáneo Compacto Cónico Recto Hembra**

MODELO	D	P	T	L	A	B	H	X	Y	Orificio	PESO
PCF-C 03-M3	3	7.5	M3*0.5p	17.3	4.0	11.1	8	9.2	7.2	2.5	4.0
PCF-C 03-M5	3	7.5	M5*0.8p	18.8	6.0	11.1	8	9.2	7.2	2.5	4.0
PCF-C 03-M6	3	7.5	M6*1.0p	18.8	6.0	11.1	8	9.2	7.2	2.5	5.0
PCF-C 04-M3	4	8.0	M4*0.5p	18.2	4.0	11.6	8	10.4	8.2	2.5	4.0
PCF-C 04-M5	4	8.0	M5*0.8p	19.7	6.0	11.6	8	10.4	8.2	3.0	4.0
PCF-C 04-M6	4	8.0	M6*1.0p	19.7	6.0	11.6	8	10.4	8.2	3.0	5.0
PCF-C 04-01	4	8.0	R 1/8	23.2	8.5	11.6	12	10.4	8.2	3.0	7.0
PCF-C 06-M5	6	10.0	M5*0.8p	21.4	6.0	12.8	10	12.4	10.2	4.0	5.0
PCF-C 06-M6	6	10.0	M6*1.0p	21.4	6.0	12.8	10	12.4	10.2	4.0	5.0
PCF-C 06-01	6	10.0	R 1/8	25.4	8.5	12.8	12	12.4	10.2	4.0	7.0



Round male Straight



**POC-C : Racor Instantáneo Compacto Cónico Recto Circular**

MODELO	D	P	T	L	A	B	H	X	Y	Orificio	PESO
POC-C 03-M3	3	7.0	M3*0.5p	17.1	4.0	11.1	1.5	9.2	7.2	1.5	2.0
POC-C 03-M5	3	7.0	M5*0.8p	17.7	4.6	11.1	2.0	9.2	7.2	2.0	4.0
POC-C 03-M6	3	8.0	M6*1.0p	18.2	5.1	11.1	2.0	9.2	7.2	2.0	4.0
POC-C 04-M3	4	8.0	M3*0.5p	17.7	4.0	11.6	1.5	10.4	8.2	1.5	3.0
POC-C 04-M5	4	8.0	M5*0.8p	18.2	4.6	11.6	2.5	10.4	8.2	2.5	4.0
POC-C 04-M6	4	8.0	M6*1.0p	18.8	5.1	11.6	3.0	10.4	8.2	3.0	4.0
POC-C 04-01	4	10.0	R 1/8	17.3	8.0	11.6	3.0	10.4	8.2	3.0	6.0
POC-C 06-M5	6	10.0	M5*0.8p	19.4	4.6	12.8	2.5	12.4	10.2	2.5	4.0
POC-C 06-M6	6	10.0	M6*1.0p	19.9	5.1	12.8	3.0	12.4	10.2	3.0	4.0
POC-C 06-01	6	10.0	R 1/8	19.6	8.0	12.8	4.0	12.4	10.2	4.0	5.0