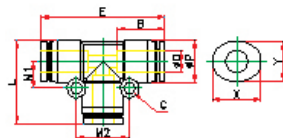


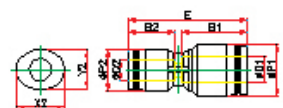
PUL-C : Racor Instantáneo Codo Compacto

MODELO	D	P	L	E	C	B	X	Y	Orificio	PESO
PUL-C 03	3	7.6	17.1	17.1	3.2	11.1	9.2	7.2	2.4	1.0
PUL-C 04	4	8.5	18.5	18.5	3.2	11.6	10.4	8.2	3.0	2.0
PUL-C 06	6	10.7	21.8	21.8	3.2	12.8	12.4	10.2	4.0	4.0



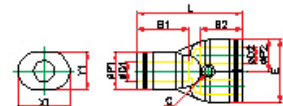
PUT-C : Racor Instantáneo "TE" Compacto

MODELO	D	P	L	E	C	B	M1	M2	X	Y	Orificio	PESO
PUT-C 03	3	7.6	17.1	26.6	3.2	11.1	5.4	10.7	9.2	7.2	2.4	2.0
PUT-C 04	4	8.5	18.5	28.6	3.2	11.6	5.8	11.6	10.4	8.2	3.0	3.0
PUT-C 06	6	10.7	21.8	33.0	3.2	12.8	6.9	13.8	12.4	10.2	4.0	5.0



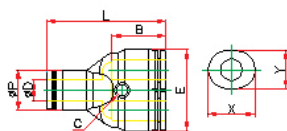
PG-C : Racor Instantáneo Reducción Compacto

MODELO	D1	D2	P1	P2	E	B1	B2	X1	Y1	X2	Y2	Orificio	PESO
PG-C 04-03	4	3	8.5	7.6	23.8	11.6	11.1	10.4	8.2	9.2	7.2	2.4	2.0
PG-C 06-03	6	3	10.7	7.6	24.2	12.8	11.1	12.4	10.2	9.2	7.2	2.5	2.0
PG-C 06-04	6	4	10.7	8.5	26.3	12.8	11.6	12.4	10.2	10.4	8.2	3.0	3.0



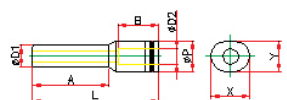
PY-C : Racor Instantáneo Unión "Y" Compacto

MODELO	D	P	L	E	C	B	X	Y	Orificio	PESO
PY-C 03	3	7.6	26.8	15.2	3.2	11.1	9.2	7.2	2.4	4.0
PY-C 04	4	8.7	28.0	17.4	3.2	11.8	10.4	8.2	3.0	3.0
PY-C 06	6	10.8	30.8	21.6	3.2	12.9	12.4	10.2	4.0	5.0



PW-C : Racor Instantáneo Reducción "Y" Compacto

MODELO	D1	D2	P1	P2	L	E	C	B1	B2	Orificio	PESO
PW-C 04-03	4	3	8.2	7.6	27.5	15.2	3.2	11.8	11.3	2.0	4.0
PW-C 06-03	6	3	10.8	7.6	28.7	15.2	3.2	12.9	11.3	2.4	4.0
PW-C 06-04	6	4	10.8	8.7	29.2	17.4	3.2	12.9	11.8	3.0	4.0



PGJ-C : Racor Instantáneo Compacto Reducción Espiga Recto

MODELO	D1	D2	P	L	A	B	X	Y	Orificio	PESO
PGJ-C 04-03	4	3	7.6	30.4	18.0	11.3	9.2	7.2	2.4	1.0
PGJ-C 06-03	6	3	7.6	32.0	21.6	11.3	9.2	7.2	2.4	2.0
PGJ-C 06-04	6	4	8.4	33.7	21.8	11.8	10.4	8.2	3.0	2.0